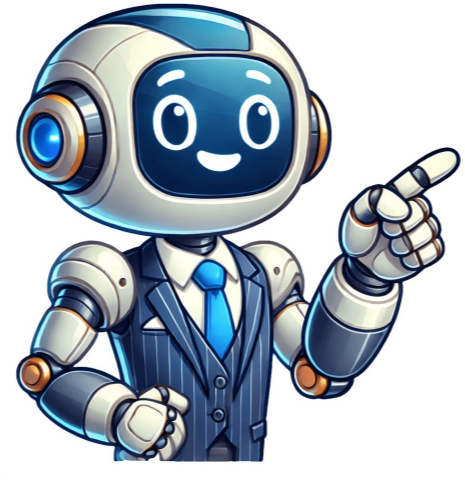


Continue



Manual archicad 24 español

Accede al manual de usuario completo y con búsqueda para cada producto de nuestra empresa. ¿Quieres aprender Archicad? En este artículo, te explicamos los pasos para empezar. Archicad es el primer software de Modelado de información de construcción (BIM) para Macintosh y Windows. Permite diseñar con elementos de modelado 3D y de dibujo paramétrico. El BIM permite un diseño basado en objetos inteligentes y en tercera dimensión. La alternativa a Revit es el software de gran prestigio, pero muchos usuarios afirman que Archicad es más completo y estable. Algunas oficinas de arquitectura famosas como BIG se han pasado definitivamente a Archicad después de años utilizar Revit. Antes de empezar, necesitarás tener la última versión instalada en tu ordenador. La licencia es de pago, pero podemos descargar una versión gratuita de prueba. **###Opciones para aprender Archicad 1. **Curso**:** Aprender a usar cualquier nuevo programa mediante un curso. Te permitirá avanzar paso a paso con un profesor especializado y obtener un certificado. * 30h de teoría y práctica + 10h de proyecto final 2. ****Manual**:** Leer el manual de Archicad para complementar la opción anterior. 3. ****Tutoriales de YouTube**:** Aprender de forma autodidacta mediante tutoriales de YouTube. **###Recursos adicionales** * Manual de Archicad PDF (Paso a paso) * Tutorial Paso a Paso para ArchiCAD * Curso / Tutorial Revit Desde cero Español * Curso / Tutorial GOOGLE SKETCHUP Descargar Para aplicar la tecnología de edificio virtual de manera efectiva en el diseño, producción, colaboración y análisis de información es crucial entender las herramientas y conceptos clave de ArchiCAD. A diferencia de otros sistemas CAD, ArchiCAD ha sido desarrollado con base en los principios fundamentales de la arquitectura, lo que lo hace una opción completa para profesionales del sector. Varias empresas de arquitectura, desde pequeñas firmas hasta grandes compañías especializadas en diferentes tipos de proyectos, utilizan ArchiCAD y su sistema de edificio virtual. En este texto se presentan las declaraciones de varios arquitectos sobre la utilidad de ArchiCAD y la tecnología del edificio virtual. Se ofrece una guía paso a paso para aprovechar al máximo las herramientas de ArchiCAD, desde la personalización del entorno de dibujo hasta la creación de un plano de techos y la situación del edificio en un entorno. La guía se divide en varias partes, cubriendo temas como la definición del proyecto, el trabajo con piso, la visualización en 3D, la administración de información de proyecto, entre otros. También se abordan aspectos como la mediciones y costes de un edificio, la presentación del diseño al cliente mediante perspectivas, animaciones y realidad virtual. Finalmente, se proporcionan detalles sobre cómo producir y publicar dibujos, incluyendo el layout, la colocación y examen de los dibujos, así como su impresión y plotado. La guía también aborda aspectos importantes como la detallada revisión de proyectos, la gestión del equipo y la archivo de proyectos. Se puede descargar este libro completo en formato PDF a través de los enlaces proporcionados. Esperamos que esta guía sea útil para los profesionales de la arquitectura que buscan aprovechar al máximo las herramientas de ArchiCAD y mejorar su eficiencia en el diseño, producción y colaboración. DESCARGA (Mediafire) Baja de Pc y Movil DESCARGA (Mega) Baja solo desde PC Instalación y configuración de ARCHICAD para BIM Managers: Guía paso a paso para la instalación, migración y configuración del software. Nuevas características en ARCHICAD 25, migración y configuración del entorno de trabajo. **###Conceptos y herramientas**** * El entorno de trabajo de ARCHICAD * Comprender los objetos y el GDL (Graphical Data Language) * Personalización del entorno de dibujo * Administración de la información de proyecto **###Definición del proyecto**** * Crear el edificio virtual * Establecer la organización básica del edificio * Visualización del edificio en 3D * Trabajo con pisos y envoltorio del edificio * Desarrollo del diseño * Añadir circulación interna y detalles finales **###Mediciones y costes de un edificio**** * Calcular la información de la construcción * Crear listados de construcción **###Presentación del diseño al cliente**** * Usar perspectivas y desarrollar una animación * Crear un estudio de aseoleo y definir una sección 3D **###Producción y publicación de dibujos**** * Crear el layout/lámina * Colocar, situar y examinar los dibujos * Publicar, imprimir y plotear **###Gestión y archivo de proyectos**** * Detalles de proyecto * Revisar un proyecto * Manejar un proyecto Teamwork * Archivar un proyecto Archicad: Unlocking Creative Potential for Architects At Nikken Sekkei, Japan, and Artechnic Architects, Japan, architects harness the power of Archicad, a leading BIM software developed by experts in the field. The tool's simplicity belies its profundity, making it easy to learn yet powerful enough to unleash creativity. Archicad offers complete documentation tools and a publishing workflow that meets local BIM requirements, allowing designers to focus on their work rather than paperwork. With its robust algorithmic design tools and large model support, the software empowers architects to create stunning architecture. The platform's free-form tools transform ordinary designs into extraordinary ones, while its intuitive interface enables seamless 2D and 3D modeling in a familiar environment. Users can model projects at any level, from conceptual volume models to full Building Information Models. To enhance design experience, Archicad introduces Dark Mode for reduced eye strain in low-light conditions. Its flexible modeling systems and Curtain Wall and Stair Tool offer an intuitive and productive design experience. Built-in MEP design tools further integrate Archicad's approach, allowing architects to access intelligent equipment within the architectural model. This enables seamless integration of MEP systems without a federated approach. In addition, Archicad's design automation tool sets empower users to create smart, parametric building components, manage large projects' functional requirements, and leverage computational tools for more efficient design. Firms like Nikken Sekkei and Artechnic Architects use BIM and Archicad to work smarter, not harder. By combining the strengths of three unique design environments — Archicad, Grasshopper, and Rhino — architects can create innovative forms and shapes that redefine architecture. Archicad is a powerful tool that offers a seamless workflow with industry-leading algorithmic design tools, making it easy to create custom parametric library objects and building elements without writing code. The software also features a built-in parametric design tool called PARAM-O, which allows users to quickly explore design variations and fine-tune building details using algorithms. For managing functional requirements on large and complex buildings, the Archicad-dRofus connection tool provides a valuable solution. This feature enables users to easily translate their conceptual designs into compelling visualizations of future buildings, making it easy to bring models to life and engage stakeholders. In addition to these features, Archicad offers various rendering options, including Sketch Render, White Render, and CineRender/Redshift. These tools allow users to quickly communicate design intent and construction techniques through fly-through animations and stunning photo-realistic renderings. Archicad also partners with other software companies to enhance its capabilities. For example, the company's collaboration with D5 Render brings top-tier speed and quality to AEC design workflows. Furthermore, Enscape is a real-time rendering solution that seamlessly integrates with Archicad, enabling users to ideate, communicate, and showcase designs in real-time at every step of the design process. Seamless data exchange between modeling and visualization tools ensures that any modifications are synchronized, providing a single source of truth. Enscape, available for both Windows and macOS, offers various export options, including VR support, web standalone, local standalone, panorama tours, and video paths, allowing clients to fully comprehend the scale of design projects through immersive environments. A special offer is available for Graphisoft Forward subscribers, who can obtain a two-year Enscape subscription for the price of one. By leveraging technology, designers can take clients on a journey to experience their envisioned designs, creating a more engaging and immersive experience. The Archicad model can be easily exported to favorite AR or VR solutions, enabling effortless exploration and understanding of building models. BIMx, an award-winning solution, facilitates easy exploration and comprehension of building models, enabling fast and specific client feedback. The powerful BIMx 3D engine allows for presenting projects of any size on mobile devices, while Google Cardboard enables clients to immerse themselves in virtual reality. Additionally, the Archicad — Datasmith Exporter enables seamless conversion and import of 3D scenes into Unreal Engine 5 for high-end visualizations. Collaboration is guaranteed through open standards and workflows, allowing teams to work together on projects of any size and complexity. Archicad's smart change monitoring and real-time notifications enable intuitive detection and visualization of changes between models and revisions. The software also resolves issues faster, reducing the risk of unsolved issues, and provides clear organization and real-time notifications of BIM model changes. With multiple stakeholders involved in each project, following, understanding, and adapting ongoing design changes is a significant task that can be streamlined with effective issue management and sorting. Archicad's collaboration tools enable seamless design changes, allowing architects to compare and filter versions efficiently. This streamlines the process of evaluating design variants and identifying optimal designs. Furthermore, accurate change detection helps assign issues to specific problems, making project management more manageable. Thanks to BIMcloud, team members can access and share up-to-date models in real-time, regardless of their location or the complexity of the project. This feature reduces errors and enhances collaboration among architects, engineers, and builders worldwide. Archicad's Open BIM approach welcomes software vendors, AEC practices, and building owners to collaborate on projects of any size or complexity. This openness fosters partnerships based on transparency, quality assurance, and accessible data, ensuring that all stakeholders can communicate effectively in 3D using IFC standards. Archicad's integration with Bluebeam Connection allows for direct access to key features during the PDF review process, streamlining mark-ups and issue tracking. The bi-directional connection between Archicad and Revu enables seamless importing of mark-ups as native issues entries. Additionally, the Archicad-Solibri connection add-on provides automated code- and constructability checking using Solibri's quality control technologies. This simplifies the design process by allowing architects to quickly check and amend designs as necessary. Archicad also facilitates exchange of design information with Autodesk Revit through direct import and export of elements, including their precise geometry and parameters, via Hotlink or Publish functions in BIMcloud. Archicad - Comprehensive BIM Documentation Solution With Archicad, you can efficiently create COBie documentation from your IFC data exchange capabilities, allowing you to focus on designing rather than paperwork. The software offers customizable out-of-the-box documentation tools and a powerful publishing workflow that meets local BIM requirements. Get high-quality documentation sets straight from the BIM model, fine-tune their look and feel, and extend your design services with quantity takeoffs. Easily create schedules and sheets with accurate information, ensuring no mistakes or miscalculations. Archicad provides intuitive features for creating graphic documentation directly from the 3D model, ensuring best visual quality. Take control of your documentation display with built-in tools and produce high-quality deliverables that meet local standards easily and quickly. The software also offers access to BIM data templates, standard detail libraries, and automation scripts in Python, making it easy to comply with local standards and incorporate existing information into project documentation. Archicad BIM Software Subscription Details Lower your costs and upgrade your productivity with Archicad BIM software, featuring exclusive tools, learning resources, and 24/7 support. Product updates are included in your subscription. ****System Requirements**** Check the minimum and recommended system requirements for a seamless experience with our solutions. ****Subscription Plans**** - Starting from €179 + tax / month (with upfront payment of €2,151 + tax) for a 1-year term/seats - Starting from €211 + tax / month (with upfront payment of €2,530 + tax) for a 1-year term/seats ****Product Features**** Archicad BIMx Pro and BIMcloud Software as a Service include: * Model and document tools for 3D architectural modeling and documentation * Building information management * Out-of-the-box object library with custom object creation capabilities * MEP Designer (included until October 2025) * Cineware and Redshift by Maxon for realistic image renders * Archicad AI Visualizer * Collaborative Local teamworking with BIMcloud Basic * OPEN BIM interoperability, including BCF import and linked modules Archicad BIMx Pro includes additional Teamwork functions. ****Additional Features**** - Your private BIMcloud server hosted by Graphisoft - Flexible licensing options, including floating licenses and portable cloud licenses - MFA for IT security - Localized language version with option to choose any globally - Free Archicad EDU license for students and teachers