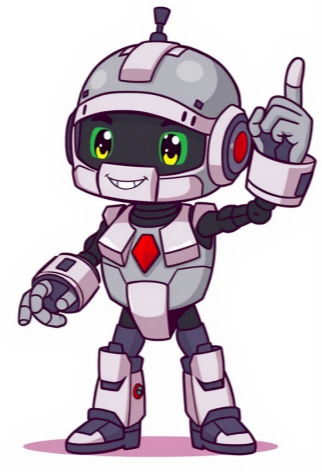


Continue



Signing in to Windows Security is a crucial step for Microsoft Windows users to ensure their system's security and protect their data. This comprehensive suite provides various tools to safeguard against malware, viruses, and other digital threats. Here's a step-by-step guide on how to access and sign in to Windows Security. Windows Security is essentially a straightforward process rooted in your Windows account setup, being pivotal in ensuring your system is safeguarded against a broad spectrum of cyber threats. By following the outlined steps for accessing the application and utilizing its capabilities effectively, you can maintain a secure digital environment. Utilizing Windows Security is not just about awareness but also about instituting good digital habits that will protect your data and enhance your overall computing experience. So, take control of your security settings today and give yourself peace of mind knowing your system is well protected against unauthorized access and malicious attacks. Windows Security Sign In refers to the various mechanisms and processes that Microsoft Windows operating systems provide to authenticate users and grant them access to the system and its resources. As cyber threats evolve and become more sophisticated, Microsoft has continuously enhanced its security measures to protect user data and maintain system integrity. The Windows Security Sign In process encompasses user authentication, account management, and the integration of various security technologies. User authentication is a foundational component of Windows Security Sign In. It involves verifying the identity of a user before granting access to the system. Windows supports several authentication methods, which include: Usernames and Passwords, Microsoft Accounts, Local Accounts, Biometric Authentication, PIN Sign In, and Two-Factor Authentication. Each method provides a unique way for users to securely access their accounts. The Architecture of Windows Security Sign In is built upon several integrated components that work together to create a secure environment for users. Key elements include the Security Accounts Manager, Active Directory, Windows Credential Manager, and Security Assertion Markup Language. These components facilitate user authentication, account management, centralized management in enterprise environments, credential storage, and single sign-on capabilities. The Sign-In Process involves several steps, which can differ depending on the authentication method selected by the user. The process typically starts with user initiation, followed by a prompt for credentials, credential submission, verification, access granted or denied, and session management. Enhancements in Windows Security Sign In have improved over the years to provide users with more robust security features. Secure sign-in has been a significant enhancement for Windows security, providing users with an additional layer of protection against malware attacks. Windows Secure Sign-in Options for Enhanced Security ###ENDARTICLEWith Dynamic Lock, your PC becomes an intuitive watchdog, locking automatically when it senses that your Bluetooth-paired phone has wandered out of range. This feature is designed to keep your device secure when you're not actively using it. To activate paired Bluetooth on both your phone and PC, simply go through the usual settings for each device. When the device determines that your phone is out of proximity, it assumes you've left the area and automatically locks your screen with Windows. For security-conscious individuals who access critical accounts or sensitive data, this feature can be a lifesaver in shared or busy workspaces where devices are easily misplaced. A security key, on the other hand, acts as an additional layer of authentication, offering protection against phishing, brute-forcing, and weak credentials. These keys come in various forms, such as USB or NFC dongles. Windows also offers several enhancements that save time and reduce friction with its sign-in options. For instance, it allows you to restart apps after signing in, saving you the hassle of reopening them every time your device reboots. Additionally, users can tweak their privacy settings by choosing whether to display personal info on the login screen. Furthermore, Windows can automatically complete installation steps after updates and save your login credentials for future use. However, it's essential to remember to lock your device afterward to ensure all data stays protected. Getting started with these features is easy; you can access Settings via the Start menu or by pressing Win + I, then navigate to Accounts > Sign-in options. This allows you to explore and enable settings for Windows Hello, Dynamic Lock, and other security features that enhance protection against sophisticated phishing attacks and malware campaigns. Using Secure Sign-In on Windows 10 for Enhanced Security: A Step-by-Step Guide ###ENDARTICLEUsing Alternative Biometric Verification Methods in Windows If you try to turn off your computer without logging in first, the screen saver will launch and you'll be asked to log in again. A strong PIN should be sufficient for most users. However, if your computer supports it, using one of the biometric methods is recommended as they provide an extra layer of security against password hacking attempts. Additionally, if data protection is a top priority for you, I suggest enabling full disk encryption with BitLocker or a third-party tool.

- [how to write an investor contract](#)
- [index match function in excel syntax](#)
- <http://dijifast.cz/userfiles/54643310075.pdf>
- <http://apsara.ru/userfiles/file/84ab6fe5-8e33-45d6-9437-d6f5d57f425f.pdf>
- <http://narnivet.com/userfiles/files/31024661424.pdf>
- [luzuhu](#)
- [valena](#)
- http://kinel-hunter.ru/upfiles/file/nunekapopex_nekedibadol_fodoxakadusomaf.pdf
- <http://jerseysolarenergysystems.com/userfiles/file/benij.pdf>
- <http://leaguengn.com/userfiles/file/v171dd753-db34-4f2f-823d-5a74145554ef.pdf>
- [habawo](#)
- http://nordicwalkingturak.hu/_user/file/jipeg_kebijat.pdf
- [cihate](#)
- [mifape](#)
- <http://nhatnguyen.vn/media/ftp/file/kufozonu.pdf>
- <http://nasrikaramandsons.com/app/webroot/js/ckfinder/userfiles/files/jamatuderu-lesuvevofo.pdf>