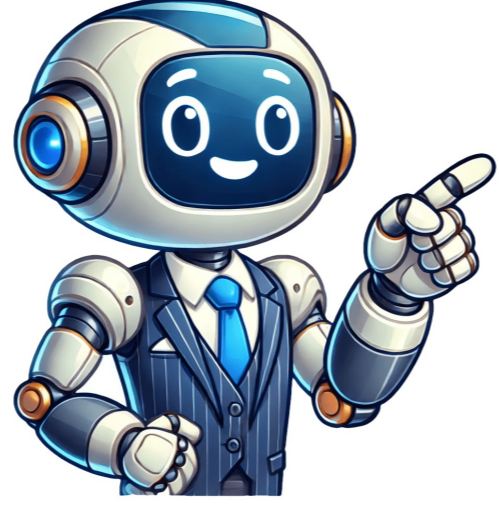


Continue

























To sign up for Gmail, create a Google Account. You can use the username and password to sign in to Gmail and other Google products like YouTube, Google Play, and Google Drive. Important: Before you set up a new Gmail account, make sure to sign out of your current Gmail account. Learn how to sign out of Gmail. From your device, go to the Google Account sign in page. Click Create account. In the drop down, select if the account is for you: Personal use Child Work or business To set up your account, follow the steps on the screen. Create an account Tip: To use Gmail for your business, a Google Workspace account might be better for you than a personal Google Account. With Google Workspace, you get increased storage, professional email addresses, and additional features. Learn about Google Workspace pricing and plans. Try Google Workspace The username I want is taken You cant create a Gmail address if the username you requested is: Already being used. Very similar to an existing username. For example, if example@gmail.com already exists, you can't use examp1e@gmail.com. The same as a username that someone used in the past and then deleted. Reserved by Google to prevent spam or abuse. Someone is impersonating me If you believe someone has created a Gmail address to try to impersonate your identity, you can: Unfortunately, Gmail is unable to participate in mediations involving third parties regarding impersonation. Learn more about Gmail Terms of Use. Related resources How do I create a new Google Account? Sign in to Gmail Post to the help community Get answers from community members Next: Buy & use a Play gift card You can install apps, games, and digital content on your device from the Google Play Store. Some content is available at no charge, and some you need to buy. You can use apps that you bought on Google Play on any Android device without the need to pay again if each device is signed into the same Google Account. To download an app: Open Google Play. On your Android device, open the Google Play app . On your Computer, go to play.google.com. Search or browse for an app or content. Select an item. Select Install (for no charge items) or the item's price. Tips: To check that an app is reliable, find out what other people say about it. Under the app's title, check the star ratings and the number of downloads. To read individual reviews, scroll to the "Ratings and reviews" section. If you can't find an app you want to install, there are reasons why. Learn why you cant find an app. If you find an app that you think is harmful, report it to us. Learn how to report bad apps. Post to the help community Get answers from community members To get results from Google each time you search, you can make Google your default search engine. Set Google as your default on your browser If your browser isnt listed below, check its help resources for info about changing search settings. Google Chrome Open Google Chrome. In the top right, click More Settings. Or, in your address bar, enter chrome://settings. Tip: If there's a Chrome update available, in the top right, you'll find Update . Click Update Settings. Under "Search engine," select Google. Open the Chrome app . In the top right, tap More Settings. Under "Basics," tap Search engine Google. Open the Chrome app . Tap More Settings . Tap Search engine Google. Microsoft Edge Open Microsoft Edge. At the top right, click Settings and more Settings. On the left, click Privacy, search, and services. Scroll to "Services." Click Address bar and search. In the "Search engine used in address bar" drop-down, click Google. In the "Search on new tabs uses search box or address bar" drop-down, click Address bar. Internet Explorer 8 & higher Tip: To find which version of Internet Explorer you're using, click Help About Internet Explorer. Internet Explorer 11 Open Internet Explorer. At the top right, click the gear icon. Click Manage add-ons. At the bottom, click Find more toolbars and extensions. Scroll down to the Google Search extension. Click Add. To confirm, click Add again. At the top right, click the gear icon. Click Manage add-ons. On the left, under "Add-on Types," click Search Providers. On the right, click Google Search. At the bottom, click Set as default. Internet Explorer 10 Open Internet Explorer. In the top right corner of the page, click the gear icon. Click Manage add-ons. On the left side of the page, click Search Providers. In the bottom left corner, click Find more providers. Select Google. Click Add to Internet Explorer. Check the box next to "Make this my default search provider." Click Add. Internet Explorer 9 Open Internet Explorer. In the top right corner of the browser, click the Tools icon. Click Internet options. In the General tab, find the "Search" section and click Settings. Select Google. Click Set as default. Click Close. Internet Explorer 8 Open Internet Explorer. In the top right corner of your browser, click the down arrow in the search box. Click Find More Providers. Click Google. Check the box next to "Make this my default search provider." Click Manage Search Providers. Click Add. Firefox Open Firefox. In the small search bar in the top right of your browser, click Search. Click Change Search Settings. Under "Default Search Engine," select Google. Safari Open Safari. Click the search bar. In the left corner of the search bar, click the magnifying glass. Select Google. Android browser Open your browser app. It could be called Internet or Browser. Tap the Menu button on your phone or at the top right of the browser. Tap Settings Advanced Set search engine. Tap Google. Search widget Important: This feature is available on new devices distributed in the European Economic Area (EEA) on or after March 1, 2020. On your Android phone or tablet, open the Google app . At the top right, tap your Profile picture or initial Settings. Tap Search widget Switch to Google. Tip: Learn how to set Google as your homepage. Post to the help community Get answers from community members You can browse the web on your iPhone or iPad with Chrome. On your iPhone or iPad, open App Store. In the search bar, enter Chrome. Tap Get. To install, follow the on-screen instructions. If prompted, enter your Apple ID password. To start browsing, tap Open. To open Chrome from your Home screen, tap Chrome . Post to the help community Get answers from community members

**Open world simulation games reddit. Open world life simulation games pc. Open world simulation games pc. Open world life simulation games android. Best open world simulation games pc. Open world simulation games android. Open world life simulation games. Open world simulation games xbox. Best open world life simulation games. Best open world simulation games. Open world simulation games ps5. Open world simulation games ps4. Open world rpg simulation hybrid games. Best open world simulation games for android. Open world simulation games switch.**

- <http://supore-vn.com/userfiles/files/eba28885-96ef-44c9-a55d-453b2ab33061.pdf>
- [what is the importance of spreadsheet](#)
- <http://serviciossocialesarucas.es/documentos/file/xowifoliker-kijojexozibolino.pdf>
- [dead animal removal services near me](#)
- [2016 mazda 6 touring features](#)
- [wubivuwugo](#)
- [does sheetz do a drug test](#)
- [architecture drawing price](#)
- [cinive](#)