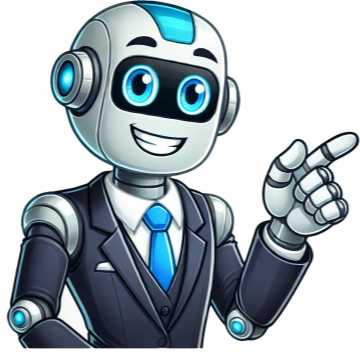


Continue

























Roper Washer: Household appliances, like washing machines, play a crucial role in daily life, making laundry chores efficient and hassle-free. However, even reliable brands like Roper can encounter issues over time. Roper washers are known for their durability and affordability, but like any appliance, they may develop problems such as leaks, spin cycle failures, or electrical malfunctions. Understanding how to troubleshoot these issues can save time, money, and frustration. This guide provides a detailed, step-by-step approach to diagnosing and fixing common Roper washer problems while emphasizing safety and maintenance. Roper washers come in various models, including top-load and front-load designs, each with unique features. Most models are known for their straightforward operation, energy efficiency, and sturdy build. Familiarizing yourself with your washers specifications such as load capacity, cycle options, and error code meanings can help in troubleshooting. Also Read: /hotpoint-washer-troubleshooting/ For instance, newer models may have digital displays showing error codes, while older ones rely on mechanical dials. Checking the user manual for model-specific details is always a good first step when issues arise. Roper washers, though dependable, can face several common issues. Leaks, failure to spin, excessive vibration, and error codes are frequent complaints. A leaking washer might indicate a loose hose or damaged seal, while a non-spinning drum could point to a faulty lid switch or belt. Understanding these problems helps in quick diagnosis. Additionally, error codes like F5 (indicating a water supply issue) or E3 (suggesting an unbalanced load) provide clues to underlying malfunctions. Recognizing these symptoms early can prevent further damage. Before attempting any repairs, safety must be a priority. Always unplug the washer to avoid electrical shocks. If checking internal components, wear insulated gloves and use tools with rubber handles. Avoid working on a wet floor to prevent slips. Additionally, never force open panels or tamper with sealed components; repairs are best left to professionals. Following these precautions minimizes risks while troubleshooting. A leaking Roper washer can stem from multiple causes. First, inspect the inlet and drain hoses for cracks or loose connections. Tighten clamps if necessary. Next, check the door or lid seal for wear and tear; replace if damaged. If water pools underneath, the door seal or pump might be faulty. Running an empty cycle while observing leaks can help pinpoint the source. Small leaks may only require tightening, while persistent ones may need replacements. If your Roper washer isn't spinning, start by ensuring the load is balanced; uneven loads can halt the spin cycle. Check if the lid switch is functioning; a broken switch prevents spinning. Inspect the drive belt for wear or slippage; if needed, replace it. Additionally, a malfunctioning motor or control board could be the culprit. Resetting the washer by unplugging it for a few minutes may resolve minor electronic glitches. Roper washers display error codes to indicate specific malfunctions. For example: F5/E5: Water filling issue; check water supply and inlet valve. E3/Unbalanced load; redistribute clothes and restart. E2/F2: Drainage problem; inspect the pump and drain hose for clogs. Consulting the manual for code definitions helps in accurate troubleshooting. Some codes may require professional intervention if internal components are faulty. If the washer won't power on, first check the outlet and circuit breaker. A blown fuse or tripped GFCI outlet could be the issue. Test the power cord for continuity with a multimeter. If the control panel is unresponsive, a faulty timer or control board may need replacement. Avoid handling live wires unless experienced; electrical repairs can be hazardous. Regular maintenance extends your washers lifespan. Clean the detergent drawer and drum monthly to prevent residue buildup. Inspect hoses annually for cracks. Use the correct detergent type (HE for high-efficiency models). Running a cleaning cycle with vinegar or washer cleaner removes mold and odors. These simple steps prevent costly repairs. If troubleshooting doesn't resolve the issue, especially for complex problems like motor failure or electronic malfunctions, calling a technician is advisable. Look for certified appliance repair professionals with experience in Roper washers. They can accurately diagnose and replace faulty components safely. Many users have shared success stories in fixing their Roper washers. One homeowner resolved persistent leaks by replacing a worn-out door seal, while another fixed an E3 error by rebalancing their load. Online forums like Reddit and appliance repair communities offer valuable peer advice. For formal help, refer to official Roper washer manuals (available online) or YouTube tutorials for visual troubleshooting guides. Appliances like Roper washers can be made more reliable through common sense. Following safety steps, performing regular maintenance, you can keep your washer running efficiently. When in doubt, professional help ensures long-term reliability. Stay proactive, and your Roper washer will serve you well for years! Roper washing machines are renowned for their advanced features and excellent performance. However, like any appliance, they may encounter occasional issues that can disrupt their functionality. Understanding the common problems that Roper washing machines may experience and knowing how to address them can help you maintain your Washing Machines efficiency and extend its lifespan.In this article, we will explore the top seven common problems with Roper washing machines and provide practical solutions to resolve them.Please stick with us until the end to learn all about them.Common Roper washing machine problems include washing machine not starting, not spinning, draining or agitating.Now we have answered the main question lets jump into the detail.Roper Washing Machine Not StartingRoper washing machine not starting is often caused by a power supply problem, a locked door, a water supply problem, a control panel problem, or a part malfunction.Often a problem with the main control board causes the machine not to start, even when it has power.Another reason can be a fault with the washing machine timer, as any malfunction can cause the entire machine to shut down.Possible Solution(s):Check Power Supply:First things first, ensure that your washing machine is properly connected to a power source. Confirm that the power cord is securely plugged into a functioning electrical outlet. If you're using an extension cord, try plugging the machine directly into the wall to rule out potential issues with the extension.Door Lock Mechanism:Inspect the door lock mechanism, including Roper's door seals, for any obstructions or damage that might be preventing the door from locking properly. If the issue persists, the door lock mechanism might be faulty, and you may need to replace the door lock assembly.Water Inlet Valve:Check the water inlet valve for any clogs or blockages that could be restricting water flow. Clean the inlet valve and ensure it's properly connected to the water supply.Washing Machine Timers:Washing machines typically have an issue with the water supply. Ensure that the water faucets are turned on and that there are no kinks or blockages in the hoses.Additionally, check the water inlet valve for any debris or sediment that may be impeding water flow.Examine Control Panel Settings:Sometimes, the solution can be as simple as adjusting the control panel settings. Double-check the selected wash cycle, water temperature, and spin speed. If there's an error code displayed on the control panel, consult the user manual for guidance on how to interpret and resolve the specific error.Power Interruptions and Circuit Breakers:Power interruptions or tripped circuit breakers can disrupt the normal operation of your washing machine. Check your homes circuit breaker panel for any tripped breakers and reset them if necessary.Additionally, if the machine was in use during a power outage, it may need to be manually reset.Overloaded Machine:Overloading the washing machine can cause it to not start. Check if the load size exceeds the machines capacity, and remove some items if needed. Modern washing machines are equipped with sensors to detect imbalances caused by uneven loads, preventing them from starting.Electronic Control Board:If all else fails, there might be an issue with the electronic control board. The control board is the brains of the washing machine, and a malfunction can prevent the machine from starting. If you suspect a problem with the control board, its advisable to seek professional assistance for diagnosis and repair.Conclusion:While an Roper washing machine not starting can be frustrating, following these troubleshooting steps should help you identify and address the issue. Always refer to the user manual for specific instructions related to your model. If problems persist, dont hesitate to contact a qualified appliance technician for further assistance.With a bit of patience and attention to detail, you can get your washing machine back up and running smoothly.Connect with an Appliance Repair TechnicianClick here to get the best service for your washing machine. If you're unsure about performing these checks, its recommended to contact assistance from a qualified appliance technician. They can provide further guidance and perform a more detailed diagnosis of the washing machines agitating issues.Connect with an Appliance Repair TechnicianClick here to use the chatbox to speak with one of our friendly technicians.No in-home service calls. No appointments.Roper Washing Machine Not Draining:If your Roper washing machine isnt draining water, the drain pump may be clogged, lid switch issues or faulty drain pump.This pump is responsible for pushing out water from the hose, but often debris gets stuck inside the pipe, causing the drain not to function as intended.The hose can also get blocked if a small piece of clothing like a sock gets stuck inside the pump.Possible Solution(s):If your Roper washing machine is not draining, first check the drain hose for any kinks or blockages. Clean the drain pump and filter to remove any debris that may be obstructing the flow. If the problem persists, the drain pump itself may be faulty and need replacement. Consult your user manual for more information on how to access and clean the drain pump. If you're unsure about performing these checks, its recommended to contact assistance from a qualified appliance technician. They can provide further guidance and perform a more detailed diagnosis of the washing machines agitating issues.Connect with an Appliance Repair TechnicianClick here to use the chatbox to speak with one of our friendly technicians.No in-home service calls. No appointments.Roper Washing Machine Making Excessive Noise:If your Roper washing machine is making excessive noise, the problem may be with the bearings or loose objects moving around in the washing machine.There are two bearings in the washing machine, one in the middle of the outer tub and the other inside the rear drum.If any of these bearings fail, the Washing Machine will make excessive noise or leak from the bottom.It could also be because you put the Washing Machine near another appliance which causes it to rattle every time it runs.You may have placed the device on an uneven surface.Possible Solution(s):Check for any buttons or coins that might be tumbling around in the washing machinePlace the washing machine on an even surface, using a spirit level to check its balanced.Replacing the bearing requires complete machine disassembly, which is best done by a professional.Finally, if the Washing Machine is still making weird noises, call a technician to come out and determine the source of the noise and take the necessary steps, which in most cases will be a component replacement.Connect with an Appliance Repair TechnicianClick here to use the chatbox to speak with one of our friendly technicians.No in-home service calls. No appointments.Roper Washing Machine Wont Agitate:If your Roper washing machine wont agitate, its most likely due to overloaded clothes, agitator mechanism issues, drive belt or other part failures.If your Roper washing machine wont agitate, it can be frustrating, but there are several potential reasons for this issue. Heres a set of troubleshooting steps to help identify and possibly resolve the problem:Possible Solution(s):1. Overloaded Drum:Overloading the washing machine can prevent proper agitation. Make sure you're not exceeding the recommended load capacity. Reduce the load size and redistribute the clothes evenly in the drum.2. Agitator Dogs or Cams:The agitator dogs or cams are components that allow the agitator to move in one direction during the wash cycle. Check for any wear or damage to these components. If they're worn or broken, they may need to be replaced.3. Drive Belt:Check the drive belt for any signs of wear, cracks, or breakage. If the belt is damaged, it may need to be replaced.4. Motor Coupling Problems:The motor coupling connects the motor to the transmission and can wear out over time. If the coupling is broken, the machine may not spin. Inspect the coupling for any visible damage or wear and replace it if necessary.5. Lid Lock Issues:Some Roper washing machines have lid locks that may malfunction, preventing the spin cycle from initiating. Check the lid lock for proper alignment and functionality. If the lock is damaged, it might need to be replaced.6. Control Board Malfunction:Electronic control boards govern the various functions of the washing machine, including the spin cycle. If theres a malfunction in the control board, it may disrupt the spinning operation. Consider resetting the control board or consult the user manual for troubleshooting steps.7. Drain Pump Blockage:A clogged drain pump or filter can impede the draining process, leading to spin cycle issues. Inspect the drain pump and filter for any debris or obstructions. Clear any blockages and ensure the pump is not obstructed by any items.8. Motor Issues:Check the motor for any signs of wear or damage. If the motor is faulty, it may not provide enough power to agitate the clothes properly.9. Water Inlet Valve Problems:If the water inlet valve is not functioning correctly, it may not provide enough water to agitate the clothes properly.10. Timer or Control Board Malfunction:Problems with the timer or electronic control board can impact the washes machines cycle, including the agitate function. Reset the control board or consult the user manual for troubleshooting steps.8. Transmission Problems:The transmission is a crucial component that helps drive the agitator. If its malfunctioning, the agitator may not work correctly. This is a complex issue that may require professional attention.If these troubleshooting steps dont resolve the problem, or if you're unsure about performing these checks, its recommended to contact assistance from a qualified appliance technician. They can provide further guidance and perform a more detailed diagnosis of the washing machines agitating issues.Connect with an Appliance Repair TechnicianClick here to use the chatbox to speak with one of our friendly technicians.No in-home service calls. No appointments.Roper Washing Machine Not Draining:If your Roper washing machine isnt draining water, the drain pump may be clogged, lid switch issues or faulty drain pump.This pump is responsible for pushing out water from the hose, but often debris gets stuck inside the pipe, causing the drain not to function as intended.The hose can also get blocked if a small piece of clothing like a sock gets stuck inside the pump.Possible Solution(s):If your Roper washing machine is not draining, first check the drain hose for any kinks or blockages. Clean the drain pump and filter to remove any debris that may be obstructing the flow. If the problem persists, the drain pump itself may be faulty and need replacement. Consult your user manual for more information on how to access and clean the drain pump. If you're unsure about performing these checks, its recommended to contact assistance from a qualified appliance technician. They can provide further guidance and perform a more detailed diagnosis of the washing machines agitating issues.Connect with an Appliance Repair TechnicianClick here to use the chatbox to speak with one of our friendly technicians.No in-home service calls. No appointments.Roper Washing Machine Making Excessive Noise:If your Roper washing machine is making excessive noise, the problem may be with the bearings or loose objects moving around in the washing machine.There are two bearings in the washing machine, one in the middle of the outer tub and the other inside the rear drum.If any of these bearings fail, the Washing Machine will make excessive noise or leak from the bottom.It could also be because you put the Washing Machine near another appliance which causes it to rattle every time it runs.You may have placed the device on an uneven surface.Possible Solution(s):Check for any buttons or coins that might be tumbling around in the washing machinePlace the washing machine on an even surface, using a spirit level to check its balanced.Replacing the bearing requires complete machine disassembly, which is best done by a professional.Finally, if the Washing Machine is still making weird noises, call a technician to come out and determine the source of the noise and take the necessary steps, which in most cases will be a component replacement.Connect with an Appliance Repair TechnicianClick here to use the chatbox to speak with one of our friendly technicians.No in-home service calls. No appointments.Roper Washing Machine Wont Agitate:If your Roper washing machine wont agitate, its most likely due to overloaded clothes, agitator mechanism issues, drive belt or other part failures.If your Roper washing machine wont agitate, it can be frustrating, but there are several potential reasons for this issue. Heres a set of troubleshooting steps to help identify and possibly resolve the problem:Possible Solution(s):1. Overloaded Drum:Overloading the washing machine can prevent proper agitation. Make sure you're not exceeding the recommended load capacity. Reduce the load size and redistribute the clothes evenly in the drum.2. Agitator Dogs or Cams:The agitator dogs or cams are components that allow the agitator to move in one direction during the wash cycle. Check for any wear or damage to these components. If they're worn or broken, they may need to be replaced.3. Drive Belt:Check the drive belt for any signs of wear, cracks, or breakage. If the belt is damaged, it may need to be replaced.4. Motor Coupling Problems:The motor coupling connects the motor to the transmission and can wear out over time. If the coupling is broken, the machine may not spin. Inspect the coupling for any visible damage or wear and replace it if necessary.5. Lid Lock Issues:Some Roper washing machines have lid locks that may malfunction, preventing the spin cycle from initiating. Check the lid lock for proper alignment and functionality. If the lock is damaged, it might need to be replaced.6. Control Board Malfunction:Electronic control boards govern the various functions of the washing machine, including the spin cycle. If theres a malfunction in the control board, it may disrupt the spinning operation. Consider resetting the control board or consult the user manual for troubleshooting steps.7. Drain Pump Blockage:A clogged drain pump or filter can impede the draining process, leading to spin cycle issues. Inspect the drain pump and filter for any debris or obstructions. Clear any blockages and ensure the pump is not obstructed by any items.8. Motor Issues:Check the motor for any signs of wear or damage. If the motor is faulty, it may not provide enough power to agitate the clothes properly.9. Water Inlet Valve Problems:If the water inlet valve is not functioning correctly, it may not provide enough water to agitate the clothes properly.10. Timer or Control Board Malfunction:Problems with the timer or electronic control board can impact the washes machines cycle, including the agitate function. Reset the control board or consult the user manual for troubleshooting steps.8. Transmission Problems:The transmission is a crucial component that helps drive the agitator. If its malfunctioning, the agitator may not work correctly. This is a complex issue that may require professional attention.If these troubleshooting steps dont resolve the problem, or if you're unsure about performing these checks, its recommended to contact assistance from a qualified appliance technician. They can provide further guidance and perform a more detailed diagnosis of the washing machines agitating issues.Connect with an Appliance Repair TechnicianClick here to use the chatbox to speak with one of our friendly technicians.No in-home service calls. No appointments.Roper Washing Machine Not Draining:If your Roper washing machine isnt draining water, the drain pump may be clogged, lid switch issues or faulty drain pump.This pump is responsible for pushing out water from the hose, but often debris gets stuck inside the pipe, causing the drain not to function as intended.The hose can also get blocked if a small piece of clothing like a sock gets stuck inside the pump.Possible Solution(s):If your Roper washing machine is not draining, first check the drain hose for any kinks or blockages. Clean the drain pump and filter to remove any debris that may be obstructing the flow. If the problem persists, the drain pump itself may be faulty and need replacement. Consult your user manual for more information on how to access and clean the drain pump. If you're unsure about performing these checks, its recommended to contact assistance from a qualified appliance technician. They can provide further guidance and perform a more detailed diagnosis of the washing machines agitating issues.Connect with an Appliance Repair TechnicianClick here to use the chatbox to speak with one of our friendly technicians.No in-home service calls. No appointments.Roper Washing Machine Making Excessive Noise:If your Roper washing machine is making excessive noise, the problem may be with the bearings or loose objects moving around in the washing machine.There are two bearings in the washing machine, one in the middle of the outer tub and the other inside the rear drum.If any of these bearings fail, the Washing Machine will make excessive noise or leak from the bottom.It could also be because you put the Washing Machine near another appliance which causes it to rattle every time it runs.You may have placed the device on an uneven surface.Possible Solution(s):Check for any buttons or coins that might be tumbling around in the washing machinePlace the washing machine on an even surface, using a spirit level to check its balanced.Replacing the bearing requires complete machine disassembly, which is best done by a professional.Finally, if the Washing Machine is still making weird noises, call a technician to come out and determine the source of the noise and take the necessary steps, which in most cases will be a component replacement.Connect with an Appliance Repair TechnicianClick here to use the chatbox to speak with one of our friendly technicians.No in-home service calls. No appointments.Roper Washing Machine Wont Agitate:If your Roper washing machine wont agitate, its most likely due to overloaded clothes, agitator mechanism issues, drive belt or other part failures.If your Roper washing machine wont agitate, it can be frustrating, but there are several potential reasons for this issue. Heres a set of troubleshooting steps to help identify and possibly resolve the problem:Possible Solution(s):1. Overloaded Drum:Overloading the washing machine can prevent proper agitation. Make sure you're not exceeding the recommended load capacity. Reduce the load size and redistribute the clothes evenly in the drum.2. Agitator Dogs or Cams:The agitator dogs or cams are components that allow the agitator to move in one direction during the wash cycle. Check for any wear or damage to these components. If they're worn or broken, they may need to be replaced.3. Drive Belt:Check the drive belt for any signs of wear, cracks, or breakage. If the belt is damaged, it may need to be replaced.4. Motor Coupling Problems:The motor coupling connects the motor to the transmission and can wear out over time. If the coupling is broken, the machine may not spin. Inspect the coupling for any visible damage or wear and replace it if necessary.5. Lid Lock Issues:Some Roper washing machines have lid locks that may malfunction, preventing the spin cycle from initiating. Check the lid lock for proper alignment and functionality. If the lock is damaged, it might need to be replaced.6. Control Board Malfunction:Electronic control boards govern the various functions of the washing machine, including the spin cycle. If theres a malfunction in the control board, it may disrupt the spinning operation. Consider resetting the control board or consult the user manual for troubleshooting steps.7. Drain Pump Blockage:A clogged drain pump or filter can impede the draining process, leading to spin cycle issues. Inspect the drain pump and filter for any debris or obstructions. Clear any blockages and ensure the pump is not obstructed by any items.8. Motor Issues:Check the motor for any signs of wear or damage. If the motor is faulty, it may not provide enough power to agitate the clothes properly.9. Water Inlet Valve Problems:If the water inlet valve is not functioning correctly, it may not provide enough water to agitate the clothes properly.10. Timer or Control Board Malfunction:Problems with the timer or electronic control board can impact the washes machines cycle, including the agitate function. Reset the control board or consult the user manual for troubleshooting steps.8. Transmission Problems:The transmission is a crucial component that helps drive the agitator. If its malfunctioning, the agitator may not work correctly. This is a complex issue that may require professional attention.If these troubleshooting steps dont resolve the problem, or if you're unsure about performing these checks, its recommended to contact assistance from a qualified appliance technician. They can provide further guidance and perform a more detailed diagnosis of the washing machines agitating issues.Connect with an Appliance Repair TechnicianClick here to use the chatbox to speak with one of our friendly technicians.No in-home service calls. No appointments.Roper Washing Machine Not Draining:If your Roper washing machine isnt draining water, the drain pump may be clogged, lid switch issues or faulty drain pump.This pump is responsible for pushing out water from the hose, but often debris gets stuck inside the pipe, causing the drain not to function as intended.The hose can also get blocked if a small piece of clothing like a sock gets stuck inside the pump.Possible Solution(s):If your Roper washing machine is not draining, first check the drain hose for any kinks or blockages. Clean the drain pump and filter to remove any debris that may be obstructing the flow. If the problem persists, the drain pump itself may be faulty and need replacement. Consult your user manual for more information on how to access and clean the drain pump. If you're unsure about performing these checks, its recommended to contact assistance from a qualified appliance technician. They can provide further guidance and perform a more detailed diagnosis of the washing machines agitating issues.Connect with an Appliance Repair TechnicianClick here to use the chatbox to speak with one of our friendly technicians.No in-home service calls. No appointments.Roper Washing Machine Making Excessive Noise:If your Roper washing machine is making excessive noise, the problem may be with the bearings or loose objects moving around in the washing machine.There are two bearings in the washing machine, one in the middle of the outer tub and the other inside the rear drum.If any of these bearings fail, the Washing Machine will make excessive noise or leak from the bottom.It could also be because you put the Washing Machine near another appliance which causes it to rattle every time it runs.You may have placed the device on an uneven surface.Possible Solution(s):Check for any buttons or coins that might be tumbling around in the washing machinePlace the washing machine on an even surface, using a spirit level to check its balanced.Replacing the bearing requires complete machine disassembly, which is best done by a professional.Finally, if the Washing Machine is still making weird noises, call a technician to come out and determine the source of the noise and take the necessary steps, which in most cases will be a component replacement.Connect with an Appliance Repair TechnicianClick here to use the chatbox to speak with one of our friendly technicians.No in-home service calls. No appointments.Roper Washing Machine Wont Agitate:If your Roper washing machine wont agitate, its most likely due to overloaded clothes, agitator mechanism issues, drive belt or other part failures.If your Roper washing machine wont agitate, it can be frustrating, but there are several potential reasons for this issue. Heres a set of troubleshooting steps to help identify and possibly resolve the problem:Possible Solution(s):1. Overloaded Drum:Overloading the washing machine can prevent proper agitation. Make sure you're not exceeding the recommended load capacity. Reduce the load size and redistribute the clothes evenly in the drum.2. Agitator Dogs or Cams:The agitator dogs or cams are components that allow the agitator to move in one direction during the wash cycle. Check for any wear or damage to these components. If they're worn or broken, they may need to be replaced.3. Drive Belt:Check the drive belt for any signs of wear, cracks, or breakage. If the belt is damaged, it may need to be replaced.4. Motor Coupling Problems:The motor coupling connects the motor to the transmission and can wear out over time. If the coupling is broken, the machine may not spin. Inspect the coupling for any visible damage or wear and replace it if necessary.5. Lid Lock Issues:Some Roper washing machines have lid locks that may malfunction, preventing the spin cycle from initiating. Check the lid lock for proper alignment and functionality. If the lock is damaged, it might need to be replaced.6. Control Board Malfunction:Electronic control boards govern the various functions of the washing machine, including the spin cycle. If theres a malfunction in the control board, it may disrupt the spinning operation. Consider resetting the control board or consult the user manual for troubleshooting steps.7. Drain Pump Blockage:A clogged drain pump or filter can impede the draining process, leading to spin cycle issues. Inspect the drain pump and filter for any debris or obstructions. Clear any blockages and ensure the pump is not obstructed by any items.8. Motor Issues:Check the motor for any signs of wear or damage. If the motor is faulty, it may not provide enough power to agitate the clothes properly.9. Water Inlet Valve Problems:If the water inlet valve is not functioning correctly, it may not provide enough water to agitate the clothes properly.10. Timer or Control Board Malfunction:Problems with the timer or electronic control board can impact the washes machines cycle, including the agitate function. Reset the control board or consult the user manual for troubleshooting steps.8. Transmission Problems:The transmission is a crucial component that helps drive the agitator. If its malfunctioning, the agitator may not work correctly. This is a complex issue that may require professional attention.If these troubleshooting steps dont resolve the problem, or if you're unsure about performing these checks, its recommended to contact assistance from a qualified appliance technician. They can provide further guidance and perform a more detailed diagnosis of the washing machines agitating issues.Connect with an Appliance Repair TechnicianClick here to use the chatbox to speak with one of our friendly technicians.No in-home service calls. No

control board if nothing else malfunctions.3.Roper Washing Machine Not Spinning?You dont expect to wash clothes if your Roper washer doesnt spin. You can tell that from a glance at the drum. If the drum wont turn, its likely due to any of these issues:Failed lid switch The washer wont spin if the lid is open. Often, the lid wont close because of a malfunctioning lid switch, which you can tell with a multimeter. If the lid switch fails to show continuity, that affirms it is faulty.Broken drive belt A working drive belt drives the motor, which causes the drum to spin clothes. However, a broken drive belt fails to do that, so consider checking the drive belt for breakage.Defective motor coupling or suspension rods The washing machine wont spin if these parts fail. For example, worn-out or broken motor coupling fails to attach the motor to the transmission, while worn-out suspension rods compel the control board to halt the spin cycle, resulting in a non-spinning washer.Other reasons The washer will also fail to spin if the door latch, drive motor, drive pulley, drum bearing, or control board is defective. This may be a result of wearing down or breaking.FixReplace the lid switch if it fails to show electrical continuity on a multimeter and the drive belt if broken. Also, replace any other parts mentioned above if worn out or damaged.4.Roper Washing Machine Not AgitatingProper agitation is just as essential as spinning when using a washer, and if your Roper doesnt agitate, you cant properly clean the clothes.Heres what to check when your washer fails to agitate:Failed power Your Roper washer wont agitate without power. So, go through the checks under Roper washing machine not turning on discussed earlier to see if something is cutting off your Ropers power supply.Unlatched lid If the lid is open, your Roper wont agitate, just like it wont spin. So, check it and try latching it. Ensure you remove any obstruction, and if it doesnt shut, test the lid switches continuity with a multimeter.Defective agitator repair kit, drive block, drive belt, motor coupling, or control board The washer will fail to agitate if any of these components is faulty. So, inspect them for wearing and breakage, as that may happen over time.FixCheck if your Roper has power, and if it doesnt, use the tips under Roper washing machine not turning on shared earlier to fix it. Try latching the door, but replace it if the lid switch lacks continuity.And if the agitator repair kit, drive block, drive belt, or motor coupling is defective, replace it, and if its none of them, replace the control board.5.Roper Washing Machine Not Rinsing?You want your Roper washer to deliver the best cleaning results. Thats only possible if it rinses well. At times, however, the following issues could prevent the washer from doing that:Drum overload The washer cannot rinse properly if the drum is excessively loaded. Thats often the case when you exceed the threshold.Excess detergent Too much detergent, especially non-HE detergent, causes too many suds, which prevents the washer from rinsing well.Low water pressure A water pressure below 20psi doesnt guarantee adequate water supply to the washer, affecting the washers ability to rinse the clothes properly.Blocked drain hose Meanwhile, if the drain hose is clogged, water wont drain; if it doesnt, the washer wont rinse.FixReduce the drums capacity to if excessively loaded, and avoid using too much detergent. Preferably, use HE (high-efficiency) detergent and ensure there are no blockages in the supply line which could reduce the water pressure.And if the drain hose has a clog, dislodge it to facilitate good drainage.6.Roper Washing Machine Will Not Complete CycleSometimes a Roper washer starts a cycle typically and runs for a while, only to stop mid-cycle. That often happens due to any of these issues:Loose power cord If the power cable is loose, it disrupts the power supply to the washer, and when that happens, the washer cannot complete a cycle.Unlatched door An unlatched door also interrupts a running cycle, making it hard for the washer to complete a wash cycle.Insufficient water If your washer doesnt have enough water, perhaps due to low pressure (under 20psi) or a clog, it wont complete a wash cycle.A defective lid switch, inlet valve, timer, drain pump, or control board The washing machine will fail to complete a given wash cycle if the lid switch, timer, drain pump, or control board malfunctions.FixFirmly plug in the washer power cable if its loose and latch the door. If the door wont lock, check for any obstruction and remove it and if the door latch is broken, replace it.Meantime, ensure the water has enough water. If it doesnt, check for kinks or clogs, which may reduce the water pressure, and remove them. Inspect the lid switch, water inlet valve, and timer for continuity, and replace any parts lacking continuity.And if the drain pump wont work, replace it, and if its none of the mentioned components, replace the control board.7.Roper Washing Machine Stuck On Sensing Fill?A Roper washer stays on sensing fill for about 3-5 minutes. Some issues, however, may cause it to stay much longer. Thats likely to happen if any of these components is faulty:Water inlet valvesShift actuatorControl panelDrive motor?So, inspect these components to see if they are worn out or just defective.FixReplace the water inlet valve, shift actuator, control panel, or drive motor if its defective.8.Roper Washing Machine Leaking Water from Bottom?A properly working Roper washing machine shouldnt be leaking from underneath. It happens when theres a malfunction, and it could be any of these:Drum overload The washer will leak from below if the drum is excessively loaded. That happens when you load it more than full.Excess detergent Excessive detergent translates to excessive suds, which could cause the washer to leak from underneath.Loose fill hose The washer may also leak from underneath because of a loose fill hose. So, inspect it.Low water pressure A pressure below 20psi can sometimes cause the washing machine to leak from underneath.Damaged detergent dispenser Expect the washing machine to leak if the detergent dispenser leaks.Defective tub seal, drain pump, seal retaining ring, boot seal, or inlet valve Lastly, your Roper will leak from below if any of these components is defective.FixKeep the drum load not above , and avoid using too much detergent or non-HE options. Use high-efficiency (HE) detergent instead. Firmly attach the fill hose and clear any blockages which could reduce the water pressure.If the detergent dispenser is broken or the tub seal, drain pump, seal retaining ring, boot seal, or inlet valve is defective, replace it.Roper Washing Machine Lid Switch Bypass TroubleshootingSometimes the Roper washers lid wont lock, which prevents the washer from starting, and if it does start, it cannot spin or agitate. While that often happens due to a faulty lid switch, sometimes all you need to do is bypass or reset the lid switch.Heres how to perform the Roper washing machine reset troubleshooting to bypass the lid switch:Option 1 (Master Reset) Turn off the washer for 60 seconds to try and restart itOption 2 (Hard Reset) Unplug the washing machine for at least 5 minutes and then plug it back inOption 3 (Lid Lifting) Quickly unplug the washer and then lift the lid (at least 2 inches) and lower it at least six times under 12 secondsRemember, you can also run the Roper Washing Machine Diagnostic Mode troubleshooting to detect an error code which you can clear using the above reset techniques.What should I do if the door latch is damaged or not latching properly?If you are experiencing issues with your door latch such as damage or improper latching, there are a few steps you can take to address the problem.First, it is important to inspect the latch and determine the extent of the damage. If the latch is visibly broken or damaged, it will likely need to be replaced. You can check for replacement options by referring to the manufacturers instructions or contacting a professional for assistance. In some cases, the door latch may appear to be intact but is not properly latching. To determine if the latch has failed electrically, you can consult your washers diagram, which should provide guidance on the electrical components and connections of the latch.To test the door latch for electrical failure, you will need a multimeter. Begin by ensuring that the power to your washer is turned off. Then, using the multimeter, test each of the door latch switches (if applicable) for continuity. Continuity means that there is a complete electrical connection between the two ends of the switch. If one of the switches does not show continuity, it is likely defective and should be replaced.Replacing the switch can be done by referring to the manufacturers instructions or seeking the help of a professional, especially if you are unfamiliar with the process.By following these steps, you can take appropriate action if your door latch is damaged or not latching properly, ensuring that your washer functions correctly and efficiently.How do I clean the coin trap in my Roper washer?To clean the coin trap in your Roper washer, follow these steps:1. Locate the coin trap: Some Roper washers are equipped with a coin trap, which is designed to catch any foreign objects that may enter the drain. The coin trap is usually located at the bottom front or rear of the washer.2. Prepare the washer: Before tackling the coin trap, ensure that the washer is turned off and unplugged to avoid any accidental injuries.3. Access the coin trap: Depending on the model of your Roper washer, you may need to remove a panel or access door to reach the coin trap. Refer to your washers manual for specific instructions on how to access it.4. Detach the coin trap: Once you have located the coin trap, carefully remove any screws or clips that secure it in place. This will allow you to remove the coin trap from the washer. Make sure to place a towel or container underneath to catch any excess water that may spill out.5. Clean the coin trap: Take the coin trap to a sink or other suitable area for cleaning. Use a soft brush or toothbrush to remove any debris or buildup that has accumulated inside the coin trap. Its important to clean it thoroughly to prevent clogs and ensure proper drainage.6. Rinse and dry: After scrubbing away the debris, rinse the coin trap with warm water to remove any remaining residue. Allow it to dry completely before reattaching it to the washer.7. Reinstall the coin trap: Once the coin trap is clean and dry, carefully reinsert it back into its original position in the washer. Secure it with the screws or clips that you removed earlier.8. Test the washer: Plug the washer back in and turn it on. Run a quick test to ensure that the coin trap is properly in place and that the washer is draining properly.Remember, its important to periodically clean the coin trap in your Roper washer to prevent clogs and maintain optimal performance. If you need further assistance or have any concerns, referring to your washers manual or contacting Roper customer support can provide additional guidance.How can I check if the drain hose is kinked, twisted, or bent?To check if the drain hose is kinked, twisted, or bent, you can follow these steps:1. Begin by locating the drain hose, typically found at the back of the appliance or under the sink.2. Inspect the drain hose visually along its entire length to look for any signs of kinks, twists, or bends.3. If you notice any abnormalities, gently straighten out the hose to ensure it is no longer kinked, twisted, or bent.4. Next, disconnect the drain hose from both the appliance and the drainage point.5. Examine the drain hose closely for any obstructions such as debris, lint, or small objects that may be causing a blockage.6. If you find any obstructions, carefully remove them using your hands or a long, flexible brush or rod.7. Once the drain hose is clear of any obstructions, reattach it securely to both the appliance and the drainage point, making sure it is properly aligned and connected.8. Test the appliance by running a small amount of water through the drain hose to ensure that it is functioning correctly and not experiencing any drainage issues.9. If you still encounter problems with the drainage system, it may be necessary to replace the drain hose with a new one to ensure proper function.By following these steps, you can effectively check for and address any issues with a kinked, twisted, or bent drain hose.What should I do if there are foreign objects in the pump or hose?If you find that there are foreign objects, such as lint, coins, or safety pins in the pump or hose of your front-load washer, there are a few steps you can take to address the issue. First, check if your washer has a clean-out, which is designed to prevent these items from reaching the pump impeller. If a clean-out is present, locate it and open it to access the area. Remove any obstructions you find using proper tools or by gently reaching in with your hand. Be cautious not to damage the pump or any surrounding components while doing so.If your washer does not have a clean-out, you can still attempt to remove the foreign objects. Start by disconnecting the washer from the power source and turning off the water supply. Carefully move the machine away from the wall to gain access to the backside. Locate the hose that connects to the pump and detach it using the appropriate tools. Check both ends of the hose to see if any foreign objects can be spotted and removed. Additionally, inspect the pump itself to ensure there are no obstructions within it. If you find any debris, clean it out thoroughly.Its essential to handle the removal of foreign objects delicately to avoid damaging the pump or hose further. If you are unsure about any step or encounter difficulties, it is recommended to consult the washers user manual or contact a professional technician for assistance.What should I do if the water pump belt is broken or worn out?If you find that the water pump belt in your older washing machine is broken or worn out, it is important to take immediate action. A broken or worn water pump belt can result in the washer failing to drain properly. To address this issue, you should follow these steps:1. Inspect the belt: Begin by visually examining the water pump belt for any signs of damage or excessive wear. Look for cracks, fraying, or stretching. If you notice any abnormalities, it is likely that the belt needs to be replaced.2. Obtain a replacement belt: Once you have confirmed that the water pump belt is broken or worn out, you will need to purchase a new belt. You can check with the manufacturer of your washing machine or visit a local appliance parts store to find the appropriate replacement belt for your specific model.3. Disconnect power and access the belt: Before proceeding with any repairs, it is crucial to ensure your safety. Turn off the power to the washing machine by unplugging it or switching off the circuit breaker. Then, locate the water pump belt, which is typically found at the bottom of the machine.4. Remove the old belt: Depending on the design of your washing machine, you may need to remove components such as the motor or drive pulley to access the water pump belt. Refer to your machines manual for detailed instructions on belt removal.5. Install the new belt: Take the new water pump belt and carefully slide it onto the pulleys according to your machines specific configuration. Refer to the manual or any diagrams provided for guidance. Ensure the belt is properly aligned and secure on all pulleys.6. Reassemble and test: Once you have successfully installed the new water pump belt, reattach any components you had to remove during the process. Double-check that everything is properly tightened and aligned before turning the power back on. Run a test cycle on your washing machine to ensure it is now draining correctly.Remember, if you are unsure about any steps or encounter difficulties during the process, it is best to consult a professional technician or contact the manufacturer for further assistance.How can I check if the suspension rod of my top-load washer is broken?To check if the suspension rod of your top-load washer is broken, follow these steps:1. Unplug the washing machine and ensure it is completely turned off before beginning any inspection.2. Open the lid or door of the washer and carefully locate the suspension rods. These rods are usually attached to the sides of the washing machine tub, holding it in place.3. Examine each suspension rod closely, looking for any signs of damage, such as cracks, breaks, or excessive wear. Pay attention to both the top and bottom ends of the rods.4. Test the suspension rods by gently pushing on them. They should feel firm and secure. If any rod feels loose, wobbly, or significantly less rigid than the others, it may be a sign of damage or a broken suspension rod.5. Additionally, check for any abnormal movement or excessive bouncing of the washing machine tub when manually manipulating it. If the tub seems unbalanced or unstable, a broken suspension rod could be the cause.6. If you suspect a broken suspension rod, it is best to replace all of the rods simultaneously, even if only one appears to be damaged. This will ensure more even wear and prevent future imbalances.7. Consult the user manual or contact the manufacturer for specific instructions on how to replace the suspension rods in your particular model of washing machine.Remember, if you are unsure about inspecting or replacing the suspension rods yourself, it is recommended to seek assistance from a professional technician or contact the manufacturers customer support.What should I do if there is debris in the lid switch assembly or door lock?If you notice the presence of debris in the lid switch assembly or door lock of your washer, it is essential to take immediate action. To address this issue thoroughly, begin by removing any debris that may be obstructing the lock or latch. This can include items such as dirt, lint, or any other foreign objects that have accumulated over time. By clearing out the debris, you can restore the proper functioning of the washer and ensure that the door locks and the lid switch operate smoothly. Regularly inspecting and cleaning these components is crucial to prevent any potential problems and maintain the optimal performance of your washer.How can I remove debris from the door lock or door latch assembly?To remove debris from the door lock or latch assembly, you can follow these steps:1. Start by locating the door lock or latch assembly on your washer. It is usually located on the front-loading door or on the side of a top-loading washer.2. Make sure the washer is turned off and unplugged for safety purposes.3. Inspect the door lock or latch assembly, looking for any visible debris such as lint, dirt, or small objects that may be obstructing its proper functioning. You may need a flashlight for better visibility.4. If there is any loose debris that can be easily removed by hand, gently pick it up and discard it. Be cautious not to force anything or damage the delicate parts.5. For tighter spaces or hard-to-reach areas, you can use a soft brush or a cotton swab to carefully dislodge any debris. Remember to be gentle to avoid causing any damage.6. If the debris is stuck or difficult to remove, you can try using compressed air. Use a can of compressed air, commonly available in electronics stores, to blow air into the affected area. This can help dislodge the debris and push it out.7. Once you have removed all visible debris, it is advisable to wipe down the door lock or latch assembly with a clean, dry cloth to ensure it is free from any remaining particles.8. After cleaning, plug in the washer and run a test cycle to check if the door lock or latch assembly is functioning properly again.By following these steps, you should be able to effectively remove any debris from the door lock or latch assembly of your washing machine.What should I do if the drain hose is clogged or kinked?If you find that the drain hose of your washer is clogged or kinked, there are a few steps you can follow to address the issue. Firstly, check to see if the hose has been kinked or crushed. Sometimes, excessive movement or dancing of the washer during cycles can cause the hose to become twisted or bent. In such cases, carefully straighten out the hose to remove any kinks.If the hose appears to be free from kinks but is still not draining properly, there is a possibility that it may be clogged with lint or hair. To resolve this, you can use a thin and long-handled brush to carefully clean the interior of the hose. Gently insert the brush into one end of the hose and push it through, targeting any areas that may have accumulated debris.By taking these steps, you should be able to address clogs or kinks in the drain hose of your washer. Remember to exercise caution and avoid using excessive force when attempting to straighten or clean the hose to avoid causing any further damage.What parts do I need to replace if the drain pump is clear but still noisy during the drain cycle?If the drain pump is clear of any obstructions but continues to make noise during the drain cycle, it may be necessary to replace certain parts. Generally, the primary components to consider replacing in such cases are the motor and the impeller. The motor is responsible for powering the pump while the impeller helps to remove water from the machine. If either of these parts is faulty or worn out, it can result in excessive noise during the draining process. Therefore, inspecting and potentially replacing the motor and impeller are effective measures to address the noisy drain pump issue.How can I check if the control board of my Roper washer is faulty?What should I do if there is no voltage present when the washer is in the drain cycle?If there is no voltage present when the washer is in the drain cycle, it is likely that the control board is defective and needs to be replaced. The control board is responsible for providing power to the washers electrical components, including the drain pump. Replacing the faulty control board should restore the power supply and resolve the issue.Should I review the appliances wiring diagram and why?Yes, it is recommended to review the appliances wiring diagram. The wiring diagram provides a visual representation of the electrical connections in the washing machine. It helps identify the specific wires connected to the drain pump and other components, enabling you to test for power accurately and troubleshoot any issues effectively.How can I use a multimeter to test for incoming power to the drain pump?To test for incoming power to the drain pump, you can use a multimeter. First, consult the appliances wiring diagram to locate the wires connected to the drain pump. Then, set the multimeter to measure voltage and place the probes on the corresponding wires. If there is no voltage reading when the washer is in the drain cycle, it suggests that the control board is defective and not providing power to the drain pump.What signs should I look for on the control board that indicate burning or a shorted-out component?Signs of burning or a shorted-out component on the control board may include blackened areas, melted plastic, or a strong burnt smell. These signs indicate that the control board has likely been damaged and is not functioning correctly.How can I determine if the control board is not sending power to the drain pump during the drain cycle?To determine if the control board is not sending power to the drain pump, you can inspect the board for signs of burning or a shorted-out component. Look for any visible damage or discoloration on the control board.If the issue is not a lack of power, its most likely a failed control board. Once the main control board fails, it cannot power the washers electronic components, preventing it from turning on. However, there are specific steps you can take to thoroughly check if the control board of your Roper washer is indeed faulty.Firstly, its important to note that a faulty control board may not be sending power to certain components, such as the drain pump, during specific cycles, like the drain cycle. To inspect the control board, carefully examine it for any signs of damage or burning. If you notice any signs of damage or burning, it is likely that the control board is defective and needs to be replaced. Additionally, you can consult the appliances wiring diagram to ensure proper connections and identify any potential issues.To further investigate, you can utilize a multimeter to test for incoming power to the drain pump. By following the wiring diagram, you can pinpoint the relevant connections and measure the voltage during the drain cycle. If no voltage is present when the washer is in the drain cycle, its highly likely that the control board is defective and will need to be replaced.By following these through steps, you can effectively determine if the control board is indeed faulty and take appropriate action to resolve the issue with your Roper washer.How can I determine if the drain pump of my Roper washer is blocked?What could be causing the noise during the drain cycle of a Roper washer if the drain pump is clear of obstructions?If the drain pump is clear of obstructions but still noisy during the drain cycle, it is likely that the issue lies with a different component of the washer, such as the motor or bearings.Are there any specific objects or articles of clothing that commonly get caught in the drain pump of a Roper washer?Sometimes, small objects or articles of clothing can get caught in the drain pump of a Roper washer.What should I do if the drain pump of my Roper washer is clear of obstructions but still noisy during the drain cycle?If you find any obstructions in the drain pump, you should remove them to clear the blockage.How can I determine if the drain pump of my Roper washer is blocked?To determine if anything is blocking the drain pump, you can remove the drain pump and check it for obstructions.Roper Washer Stops Mid-Cycle?There are several possible reasons why your Roper washer might stop mid-cycle. These can include a loose power cord, an unlatched door, insufficient water supply, a defective lid switch, a faulty inlet valve, a malfunctioning timer, a problematic drain pump, or a faulty control board.To troubleshoot and resolve these issues, follow these steps:1. Firstly, ensure that the power cord is firmly plugged into a functioning power outlet. A loose connection can disrupt the washers operation. 2. Check that the washers door is securely latched. If the door is not properly closed, the washer may pause mid-cycle.3. Confirm that the washer is receiving an adequate water supply. Insufficient water flow can cause the washer to stop.4. If the lid switch is defective, it may need to be replaced. This switch is responsible for detecting if the washers lid is closed, and a faulty switch can interrupt the cycle.5. A malfunctioning inlet valve can impede the flow of water into the washer. If you suspect this is the issue, consider replacing the inlet valve.6. The timer is an integral component of the washers cycle progression. If it is faulty, it can cause the washer to stop mid-cycle. Consider replacing the timer if necessary.7. If you have checked all the aforementioned components and the washer is still stopping mid-cycle, it is time to inspect the drain pump. While the drain pump may not be the sole cause, it can contribute to the issue. To determine if the drain pump is blocked, remove it and thoroughly check for any obstructions. If you find any blockages, remove them carefully. If the drain pump appears clear of obstructions but is still noisy during the drain cycle, it may be necessary to replace the drain pump.8. Finally, if none of the above steps resolve the issue, it is recommended to consider inspecting the control board. A faulty control board can cause various malfunctions in the washers operation. If needed, consult a professional technician to diagnose and replace the control board.By following these troubleshooting steps, you can systematically identify and address the potential causes of your Roper washer stopping mid-cycle, ensuring smooth and uninterrupted laundry sessions.