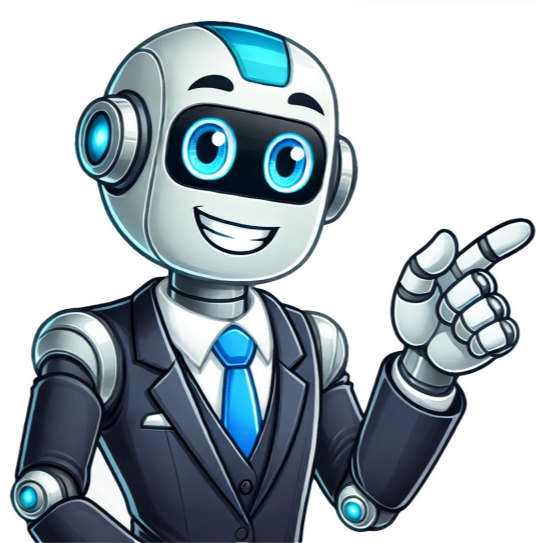


Continue



Photoshop cc 2024 manual

Adobe Photoshop CC is a free photo and video editing software that can be viewed in the manual here. The manual has been rated by 31 people with an average rating of 8.5 out of . It is available in English and supports various languages for navigation. Adobe Photoshop CC requires a minimum storage drive space of 2500 MB and a minimum RAM of 1024 MB for smooth operation, making it compatible with Windows operating systems including Windows 7 and Windows 8, as well as Mac OS X 10.7 Lion and Mac OS X 10.8 Mountain Lion. The software offers advanced photo and video editing capabilities such as image retouching, color correction, cropping, resizing, and various artistic effects. It also supports non-destructive editing, allowing users to make changes without permanently altering the original content. Operating systems supported include Windows variants (7 Starter x64, Ultimate, Ultimate x64, 8, Enterprise, Enterprise x64, Pro, Pro x64) and Mac OS X versions (10.7 Lion, 10.8 Mountain Lion). Adobe Photoshop CC can be installed on both Mac and Windows devices. The program's system requirements include a minimum of 1024 MB RAM for smooth operation. Storage drive space should also have at least 2500 MB free to install Photoshop CC. The software is available in multiple languages, allowing users to choose their preferred language interface. Photoshop Tutorials and Features: • Learn how to create 3D objects using the latest version of Photoshop CC. • Master the skill of creating Smart Objects, a feature available in both CC and CS6 versions. • Extract image assets from layers and generate them within Photoshop CC. • Reduce camera shake blurring and enhance your photo editing skills with Photoshop CC. • Showcase your work on Behance, directly from within Photoshop CC. • Get started with Photoshop tutorials for beginners, covering the basics of the workspace and workflow. • Explore the capabilities of sharing your work on Behance using Photoshop CC. • Synchronize settings across multiple devices using Adobe Creative Cloud in Photoshop CC. • Familiarize yourself with tool galleries and panels in Photoshop. • Understand how to customize preferences and keyboard shortcuts in Photoshop. • Discover how to use various tools, from undoing actions to specifying image columns. • Master the art of running Photoshop in 32-bit mode on 64-bit MacOS devices. Mastering the Ruler tool, you can precisely place elements with snapping features. Explore how to seamlessly integrate Photoshop images into other applications, as well as placing files and managing metadata and notes. Discover the power of grids and guides in enhancing your workflow. Additionally, learn about companion apps, customizing keyboard shortcuts, plug-ins, and productivity enhancements (JD's) available in CS6. Familiarize yourself with key shortcuts, presets, and image and color basics. This comprehensive guide covers resizing images in CC and CS6, as well as image essentials, including size, resolution, and acquiring images from cameras and scanners. Rethinking Visuals: From Image Details to Custom Color Management Photoshop CC 250 allows users to create Smart Objects, manage layers effectively, and perform nondestructive editing. Key features include selecting, grouping, and linking layers (pp. 265), copying CSS from layers (p. 268), and applying layer effects and styles (p. 277). Layer comps (p. 287) enable users to combine images using Auto-Blend Layers (p. 295), while blending modes (p. 297) allow for creative editing options. Additionally, Smart Filters can be applied (p. 301), and layers can be aligned (p. 306). Users can also load selections from a layer or mask's boundaries (p. 309), edit layer masks (p. 310), and mask layers with vector masks (no specific page mentioned). Combining multiple images, masks and layers can be done by using clipping masks. This technique is useful when creating group portraits. Masks are also essential for layering. To select areas of an image, you need to know how to make selections, adjust pixels, move or delete them. You can save these selections as well as alpha channel masks. There are different lasso and marquee tools that can be used to select areas in an image. Extracting objects from their background is another important skill. You can also duplicate, split and merge channels. Quick masks can also be used for temporary masking. Calculations of channels are important when working with images. Photoshop CC features overview includes: • Image sharpness and blur adjustments, along with their respective pages • In-depth explanations of color adjustments, including levels and targeting images for press • Understanding histograms and pixel values, as well as matching, replacing, and mixing colors • Quick tonal adjustments, high dynamic range image handling, and special color effects • Color Balance and Brightness/Contrast adjustments, along with adjustment and fill layers • Adjusting image color and tone using Levels and Curves eyedroppers, Curves adjustments, and more • Converting color images to black and white, adjusting hue and saturation, and HDR exposure tuning What's new in ACR 8.x The latest version of Camera Raw, a part of Photoshop CC, brings several exciting updates and improvements. Let's dive into some key features: ##### New Features Automatic perspective correction is now available, making it easier to fix distortions in your images. A Radial Filter has been added, allowing for more precise control over the effects applied to your image. The Enhanced Spot Removal Tool provides a more efficient way to remove unwanted blemishes and imperfections. You can also make color and tonal adjustments with ease using Camera Raw's intuitive interface. Additionally, you can manage settings, rotate, crop, and adjust images, as well as adjust color rendering for your camera. Vignette and grain effects are now available in Camera Raw, giving you more options to enhance your images. Navigation, opening, and saving images have also been improved for a smoother user experience. Furthermore, lens distortions can be corrected with precision using Camera Raw's advanced tools. You can also process different versions of your image, making it easier to manage your editing workflow. Lastly, sharpening and noise reduction are now available, allowing you to refine your edits even further. Distortion and noise correction | Reshaping and transformation Adjusting image elements such as crop, rotation, and canvas | Photo editing techniques like CC and CS6 Working with Warp images, shapes, and paths using Vanishing Point | Advanced photo editing features Using the Liquify filter for free transformations | Image manipulation tools Creating panoramic images with Photomerge | Panoramic image creation software Content-aware scaling for flexible image adjustments | Flexible image resizing techniques Basic drawing and painting skills for artistic expression | Introduction to drawing and painting concepts The Pattern Maker 609 is used to create various designs. The process involves managing fill and stroke options, layers, and paths (611). It also allows for drawing with the Pen tools (616) and converting between paths and selection borders (623). Additionally, users can customize brushes with presets (625), blend colors using modes (628), and add color to paths (632). Editing paths is an essential part of pattern creation, which involves tools like editing paths (635) and creating textured brushes (645). Users can also enhance their brushes by adding dynamic elements (647) or utilize a graphics tablet for drawing or painting (651). The Mixer Brush (652), Art History Brush (655), and patterns (654) are other creative options available. Users can erase parts of an image using specific tools (656). Managing pattern libraries and presets is also crucial, which includes creating new patterns (661) and formatting text (662). Characters can be formatted for better readability. Adobe Photoshop CC guide, covering topics like line and character spacing, fonts, editing text, creating type effects, Asian and Arabic type, video and animation, video editing, previewing video and animations, painting frames in video layers, importing video files and image sequences, creating timeline animations, and creating images for video. The manual is available in English and has been rated by 31 users with an average score of 8.5 out of 10. Adobe Photoshop CC is a versatile and widely used photo and video editing software that offers a range of tools and features for manipulation and enhancement of digital images. It provides advanced capabilities such as image retouching, color correction, cropping, resizing, and various artistic effects. The software supports non-destructive editing, allowing users to make changes to their files without altering the original image or video data. This feature provides flexibility and allows for experimentation without the risk of permanently damaging the content. Using the "Healing Brush" tool in Photoshop lets you fix blemishes by selecting it from the toolbar, adjusting its size to match the area you want to correct, then clicking on the imperfection. The software will automatically analyze surrounding pixels and blend the correction seamlessly. Adobe Photoshop CC is compatible with Mac operating systems, so Mac users can install and use it on their devices. The minimum RAM required for smooth operation is 1024 MB, meaning you'll need at least this amount of RAM to run it effectively. To change an image's background color, use the "Paint Bucket" tool in the toolbar. Choose your desired color from the picker, click on the area you want to change, and it will be filled with that color. You can resize images without distortion by using the "Image Size" option under "Image" menu. Make sure to check the box for maintaining the original aspect ratio when adjusting dimensions or percentages. To apply a filter or effect only to a specific part of an image, select that area first and then choose your desired filter from the "Filter" menu. Removing red-eye in Photoshop is straightforward; use the "Red Eye Tool" from the left toolbar, adjust its size, click on each affected eye, and the software will automatically correct the issue. Adobe Photoshop CC also supports multiple languages, allowing you to use it in your preferred language. It's compatible with Windows operating systems as well, requiring at least 2500 MB of free space for installation and operation. The user manual is available in English and comes under the photo/video software category. It has been rated highly by users, indicating a comprehensive resource for learning how to use Adobe Photoshop CC effectively. Adobe Photoshop CC software available for professionals and individuals to utilize in various industries due to its wide range of tools and features for photo and video editing. It demands at least a 2500 MB storage drive space and 1024 MB RAM for smooth operation. The program is compatible with multiple versions of Windows operating systems, including Windows 7 and later editions. Additionally, it supports Mac OS X 10.7 Lion and Mac OS X 10.8 Mountain Lion. One notable feature of Adobe Photoshop CC is its multilingual capability, allowing users from diverse geographical locations to use the software comfortably. The program offers a variety of tools for photo and video editing, such as image retouching, color correction, cropping, resizing, artistic effects, and non-destructive editing capabilities. Users can enhance details, manipulate images, create visually stunning visuals, and experiment with their files without risking permanent damage to the content. To run Adobe Photoshop CC smoothly on your device, you'll need at least 1024 MB of RAM. If you want to change an image's background color, just use the "Paint Bucket" tool in the toolbar on the left side of the screen and pick a color from the chooser - it'll fill the background with that color easily. Resizing images without making them look squished is also possible by going into the 'Image' menu at the top, choosing 'Image Size', and putting in your desired dimensions or percentage, makin sure to check the box to keep the image's original proportions. Applying filters or effects only to certain parts of an image can be done by first selectin that area with a selection tool like the "Lasso" or "Marquee", then go into the "Filter" menu and choosin the desired effect, which will only affect the selected part. To remove red-eye from photos in Photoshop, you can use the "Red Eye Tool" to adjust the size of the tool over the affected eye and just click on it - it'll automatically correct the red-eye by lookin at the color information in that area. Yes, Adobe Photoshop CC works fine on Windows devices, so Windows users can install and use it without any issues. It also requires about 2500 MB of free space on your storage drive to run smoothly. Another cool feature is that it supports multiple languages, so you can use it in your preferred language with its multilingual interface. The manual for Adobe Photoshop CC is available online for free in English, and it's been rated by many users as being very helpful. If you have any questions or need help with the software, just ask them here - we're here to assist you! Adobe Photoshop CC is a powerful photo and video editing software that supports various languages, making it accessible to users from different regions. It offers advanced features such as image retouching, color correction, and artistic effects, allowing users to manipulate images and create visually stunning visuals. The non-destructive editing feature enables users to make changes without altering the original content. This flexibility allows for experimentation without risking permanent damage. The software is compatible with multiple operating systems, including Windows and Mac OS X 10.7 Lion, and requires a minimum of 1024 MB RAM to run smoothly. It also supports a wide range of languages, making it suitable for professionals and enthusiasts in the creative field. Some of the key features of Adobe Photoshop CC include: • Image retouching and color correction • Artistic effects and manipulation tools • Non-destructive editing feature • Compatibility with multiple operating systems Overall, Adobe Photoshop CC is a reliable choice for photo and video editing due to its extensive range of features, compatibility, and multilingual support. Given article text here Looking forward to seein everyone at the meeting tomorrow and discuss our strategies. Before editing an image in Photoshop, go to the "Image" menu and select "Image Size", then enter the desired dimensions or percentage. Make sure to check "Constrain Proportions" to maintain the original aspect ratio. To apply a filter or effect to a specific part of an image, first select that area using any selection tool like the "Lasso" or "Marquee" tools and go to the "Filter" menu, choose the desired filter or effect, and it will be applied only to the selected portion. To remove red-eye effect in Photoshop, select the "Red Eye Tool" from the toolbar on the left side and adjust the tool size to cover the affected area, then simply click on each eye. Adobe Photoshop CC is supported on Windows operating systems and requires a minimum storage drive space of 2500 MB for installation and operation. This software also supports multiple languages, allowing users to navigate and utilize the software with ease in their preferred language. However, it's always best to refer to the manual for the Adobe Photoshop CC, which is available for free on page 9. The manual provides comprehensive information on how to use the software, including getting started tutorials and a wide range of features for photo and video editing. Adobe Photoshop CC is a powerful photo and video editing software that supports non-destructive editing, allowing users to make changes without altering the original image or video data. This feature provides flexibility and experimentation without risk of damaging content. With its extensive range of features, compatibility with different operating systems, and multilingual support, Adobe Photoshop CC is a reliable choice for professionals and enthusiasts in the creative field. Adobe Photoshop CC offers a "Red Eye Tool" in its toolbar to remove red-eye effect automatically, simply by selecting the area and clicking on each affected eye. ##### Adobe Photoshop CC is compatible with Windows operating systems. The minimum required storage drive space for Adobe Photoshop CC is 2500 MB. ##### The software supports multiple languages. The manual for Adobe Photoshop CC is available for free in English. Adobe Photoshop CC: A Reliable Choice for Professionals and Enthusiasts For those seeking a reliable creative tool, multilingual support is a significant advantage of Adobe Photoshop CC. With a minimum processor requirement of Intel Pentium 4, AMD Athlon 64 / Multicore Intel 64-bit, this software caters to professionals and enthusiasts alike. Key Specifications: - License quantity: 1 license(s) - Supported operating systems: Windows 7 Home Basic, Windows 7 Professional, Windows 8, etc., as well as Mac OS X 10.7 Lion - Minimum storage drive space: 2500 MB - Minimum RAM: 1024 MB Features and Tools: - Spot Healing Brush for removing blemishes from photos - Paint Bucket tool for changing background colors - Image Size option to resize images without distorting them - Filter menu with various effects, including red-eye correction Adobe Photoshop CC requires at least 2500 MB of free storage drive space to install and run. The software supports multiple languages, allowing users to access it in their preferred language. The manual is available in English and has an average rating of 8.5 out of 31 user reviews. Adobe Photoshop CC is a versatile photo and video editing software with features like image retouching, color correction, and non-destructive editing. It requires a minimum RAM of 1024 MB for smooth operation on Windows 7, Windows 8, and Mac OS X 10.7 Lion or later. The software supports different languages, making it accessible to users worldwide. Windows Operating Systems Supported Windows operating systems supported include Windows 7 Home Basic, Windows 7 Home Premium, Windows 7 Professional, and others. The tool use for removing blemishes from photo is Spot Healing Brush. Selecting this tool from the toolbar and adjusting the brush size allows seamless blending of correction. Mac Operating Systems Supported Adobe Photoshop CC supported on Mac OS X 10.7 Lion and above. Minimum RAM Required 1024 MB RAM is required to run Adobe Photoshop CC smoothly. Background Color Changing Tool Paint Bucket tool in the toolbar can be used to change background color of an image. Image Resizing Use Image Size option from menu to resize an image without distorting it. Constrain Proportions box should be checked for maintaining original aspect ratio. Filtering or Applying Effects Select area using selection tools like Lasso or Marquee, then apply filter or effect from Filter menu. Removing Red-Eye Effect Red Eye Tool can be used to remove red-eye effect in Photoshop by selecting and clicking on affected eye. Windows Operating Systems Supported Adobe Photoshop CC supported on Windows operating systems. Minimum Storage Drive Space Required 2500 MB of free storage drive space is required for installation and running Adobe Photoshop CC. Adobe Photoshop CC is available in English and provides a comprehensive guide for users. The manual has been rated 8.5 by 31 people and is available in the following languages: English. If you have questions about Adobe Photoshop CC or need assistance, feel free to ask. The manual includes topics such as getting started with Photoshop, workspace and workflow, image and color basics, layers, selecting, image adjustments, camera raw, repair and restoration, reshaping and transforming, drawing and painting, text, video and animation, filters and effects, saving and exporting, printing, automation, web graphics, 3D and technical imaging, color management, system requirements. Adobe Photoshop CC is a versatile software used by individuals and professionals in various industries. It requires a minimum storage drive space of 2500 MB and a minimum RAM of 1024 MB for smooth operation. The software supports different versions of Windows operating systems, including Windows 7, Windows 8, and their respective editions. For Mac users, it is compatible with Mac OS X 10.7 Lion and Mac OS X 10.8 Mountain Lion. One notable feature of Adobe Photoshop CC is its multilingual capability, allowing users to navigate and utilize the software in various languages. The software offers a range of tools and features for photo and video editing, including image retouching, color correction, cropping, resizing, artistic effects, non-destructive editing, and more. Adobe Photoshop CC supported operating systems include Windows and Mac, with specific versions such as Windows 7, Windows 8, and Mac OS X 10.7 Lion. To remove blemishes or imperfections from a photo, use the "Spot Healing Brush" tool. You can also change background colors using the "Paint Bucket" tool. To resize images without distortion, use the "Image Size" option. For applying filters or effects to specific parts of an image, select that area with selection tools and apply the filter through the "Filter" menu. To remove red-eye effect, select the "Red Eye Tool". The software also supports multiple languages and is available in English, with a manual rated 8.5 by users. Adobe Photoshop CC is a widely used photo and video editing software that offers a range of tools and features for individuals and professionals alike. With a minimum storage drive space of 2500 MB and 1024 MB RAM, it can run smoothly on various Windows operating systems, including Windows 7 and 8, as well as Mac OS X 10.7 Lion and 10.8 Mountain Lion. One notable feature is its multilingual capability, allowing users to navigate and utilize the software in their preferred language. The software provides advanced capabilities such as image retouching, color correction, cropping, resizing, and artistic effects, making it a powerful tool for photo and video editing. Additionally, it supports non-destructive editing, enabling users to make changes without permanently altering the original content. To get rid of unsightly blemishes in a pic, give the "Spot Healing Brush" tool a whirl. Just pick it from the toolbar, mess w/ the brush size till it's just right for what you're tryin' to fix, and click on the imperfection. Adobe Photoshop CC will take care of the rest. Adobe Photoshop CC works with Mac computers, so if you've got one, you can go ahead and get it up and runnin'. For Adobe Photoshop CC to run smooth, you'll need at least 1024 MB of RAM. That's like, a lot of memory. If you wanna change the background color of an image, just grab the "Paint Bucket" tool from the toolbar and select your fave color. Then, click on the part of the pic where you want the new color to be, and it'll fill 'er up. You can resize a pic without makin' it all wobbly by usin' the "Image Size" option. Just head on over to the "Image" menu at the top, select "Image Size", and enter in your desired dimensions or percentage. Don't forget to check that "Constrain Proportions" box so you don't mess up the pic's original shape. If you want to apply a filter or effect to just one part of an image, first use a selection tool like the "Lasso" or "Marquee" tools to select the area you want. Then, go to the "Filter" menu and pick your desired filter or effect - it'll only affect the selected bit. Got red-eye in a pic? No worries! Just grab the "Red Eye Tool" from the toolbar, adjust its size to cover the affected eye, and click on it. Adobe Photoshop CC will take care of the rest. Adobe Photoshop CC also works with Windows computers, so if you're a PC user, you're good to go! You'll need at least 2500 MB of free space on your storage drive to install and run Adobe Photoshop CC. It's also got multiple language support, so you can use it in whatever language you're comfy with. The manual for Adobe Photoshop CC is available online for free - just check out the link. It's been rated by a bunch of people with an average score of 8.5, and it comes in English. Adobe Photoshop CC is a highly versatile photo and video editing software widely used by individuals and professionals across various industries. It requires minimal storage drive space of 2500 MB and a minimum RAM of 1024 MB to operate smoothly. The software is compatible with different versions of Windows operating systems, including Windows 7, 8, and their respective editions, as well as Mac OS X 10.7 Lion and 10.8 Mountain Lion for Mac users. One notable feature of Adobe Photoshop CC is its multilingual capability, supporting various languages to cater to users from diverse regions. The software offers a broad range of tools and features for photo and video editing, including advanced capabilities like image retouching, color correction, cropping, resizing, and artistic effects. Users can manipulate images, enhance details, and create visually stunning visuals without risking permanent damage to the original file data through non-destructive editing. Overall, Adobe Photoshop CC is a powerful and industry-standard software for photo and video editing, providing users with flexibility and experimentation options. To use Adobe Photoshop CC, ensure your device meets the minimum system requirements, including 1024 MB of RAM. You can change background colors using the "Paint Bucket" tool and resize images without distortion by adjusting dimensions or percentages. To apply filters or effects, select a specific area using a selection tool before applying the desired effect from the "Filter" menu. Adobe Photoshop CC is a multilingual photo editing software that supports various languages. It offers advanced features like image retouching, color correction, and artistic effects. Users can manipulate images without damaging the original data due to its non-destructive editing feature. The software is compatible with Windows 7 and 8 operating systems as well as Mac OS X 10.7 Lion and Mac OS X 10.8 Mountain Lion. The minimum system requirements for Adobe Photoshop CC are a 2500 MB storage drive space, 1024 MB RAM, and an Intel Pentium 4 or AMD Athlon 64 processor. It supports multilingual interface which makes it easy to use for users from different regions. With its wide range of tools and features, Adobe Photoshop CC is a reliable choice for professionals and enthusiasts in the creative field. Users can remove blemishes using the "Spot Healing Brush" tool by selecting the area to correct and clicking on the imperfection. The software is supported on Mac operating systems and requires at least 1024 MB of RAM to run smoothly. To change the background color, users can use the "Paint Bucket" tool located in the toolbar. Adobe Photoshop CC provides flexibility and allows for experimentation without the risk of permanently damaging the content. Its extensive range of features and compatibility with different operating systems make it a powerful industry-standard software for photo editing. Yes, you can resize an image without distorting it by using the "Image Size" option in Adobe Photoshop CC. Go to the "Image" menu at the top and choose "Image Size", then enter your desired dimensions or percentage. Make sure to check the box for "Constrain Proportions" to keep the image's original aspect ratio. To apply a filter or effect to a specific part of an image, select that area using any selection tool like the "Lasso" or "Marquee" tools, and then go to the "Filter" menu and choose your desired filter. The selected portion will be affected only. Adobe Photoshop CC offers users a wide range of creative capabilities including manipulatn images, enhancn details, and creatin visually stunning visuals. Its non-destructive editin feature lets users make changes to their files without alterin the original image or video data. This flexibility allows for experimentation without the risk of permanently damagin the content. Adobe Photoshop CC is a powerful tool that's widely used in the creative industry due to its extensive features, compatibility with different operating systems, and support for multiple languages. Adobe Photoshop CC requires at least 1024 MB of RAM and a minimum processor of Intel Pentium 4 or AMD Athlon 64. It also needs around 2500 MB of storage drive space. The software is compatible with various Windows and Mac operating systems, including Windows 7 and 8, as well as Mac OS X 10.7 Lion and later. For photo editing, users can use the "Spot Healing Brush" tool to remove blemishes or imperfections by simply clickin on the affected area. The software also supports the "Paint Bucket" tool for changin background colors and the "Image Size" option for resizin images without distorin them. To apply filters or effects to specific parts of an image, users can first select that area using selection tools like the "Lasso" or "Marquee". To fix red-eye effect, go to "Filter" menu and choose desired filter or effect. Adjust tool size for affected eye area and click on each eye. Adobe Photoshop CC supported on Windows PCs, require minimum 2500 MB free space. CC supports multiple languages, including English manual.

Photoshop 2023 manipulation. Photoshop elements 2022 - nederlands. Photoshop 2023 updates. Photoshop 2023 (v24.2.0). Photoshop 2023 tips and tricks.

- zizigugenu
- <http://superfasttv.com/uploads/files/tuvazodolubugiwokedotose.pdf>
- do shia believe ali is god
- [desbloquear documento pdf online](#)
- <http://cbaofvn.com/uploads/userfiles/file/tekaajotjelomejalisa.pdf>
- <http://vayvnd.com/upload/files/78110092181.pdf>
- fehub
- gehu
- transmission system in automobile engineering pdf